



CLASS A	ANNUAL ENERGY 58 kWh
FINO A - UP TO 900 m ³ /h	MAX PRESSURE 590 Pa

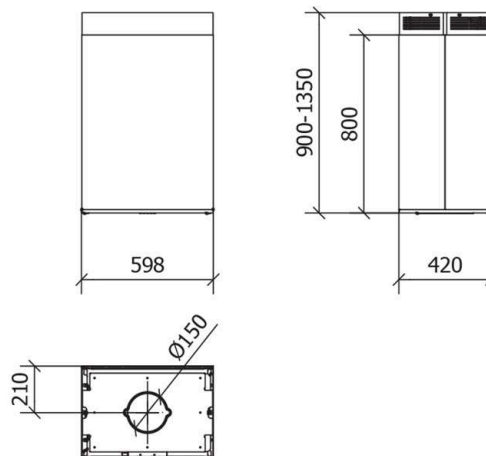
Ginza isola

60 x 42
cm



CARATTERISTICHE - FEATURES

Misura - Size	60 x 42 cm
Materiale - Material	cappa verniciata bianca, piano inferiore in inox satinato, o tutta inox body white painted, lower plan in scotch brite St-steel, or all in St/steel
Controlli - Controls	pulsantiera elettronica retroilluminata backlit electronic control
Funzioni - Functions	4 velocità con intensiva, timer, spegnimento automatico, ind.pulizia/sost. filtri 4 speed with boost, timer, automatic switch off, filter cleaning and replacement indicator
Luci Lights	LED 2x4W LED 2x4W
Aspirazione Extraction	perimetrale con pannello apribile perimetral with openable panel
Uscita aria - Duction	120 - 150 mm con valvola di non ritorno 120 - 150 with check valve
Tipo d'uso - Type	aspirante - filtrante duction - filtered
Filtro antigrasso Grease filter	in alluminio multistrato lavabile in aluminium multilayer, washable
Minima distanza Min. Distance from hob	65 cm



DIMENSIONI SCATOLA - BOX SIZE 65 x 101 x 47 cm - 38 Kg

FILTRI OPTIONAL - OPTIONAL FILTERS

Total grease filter filtro aggiuntivo antigrassi 95% (A*)	02TG465276
Total Grease filter additional grease filter 95% (A*)	
Filtro antiodori Charcoal filter	02FCCARBGRUP
Hi-Filter filtro antiodore di lunga durata, lavabile e rigenerabile Hi-Filter long-lasting, washable and regenerable odor filter	02HF465276

VERSIONI - VERSION

cm. 60x42 - Bianca e inox - White and St/Steel - 700m ³ /h 01GINIS60X40WH70
cm. 60x42 - Bianca e inox - White and St/Steel - 800m ³ /h 01GINIS60X40WH80
cm. 60x42 - Bianca e inox - White and St/Steel - 900m ³ /h 01GINIS60X40WH90
cm. 60x42 - tutta inox - all St/Steel - 700m ³ /h 01GINIS60X40ST70
cm. 60x42 - tutta inox - all St/Steel - 800m ³ /h 01GINIS60X40ST80
cm. 60x42 - tutta inox - all St/Steel - 900m ³ /h 01GINIS60X40ST90