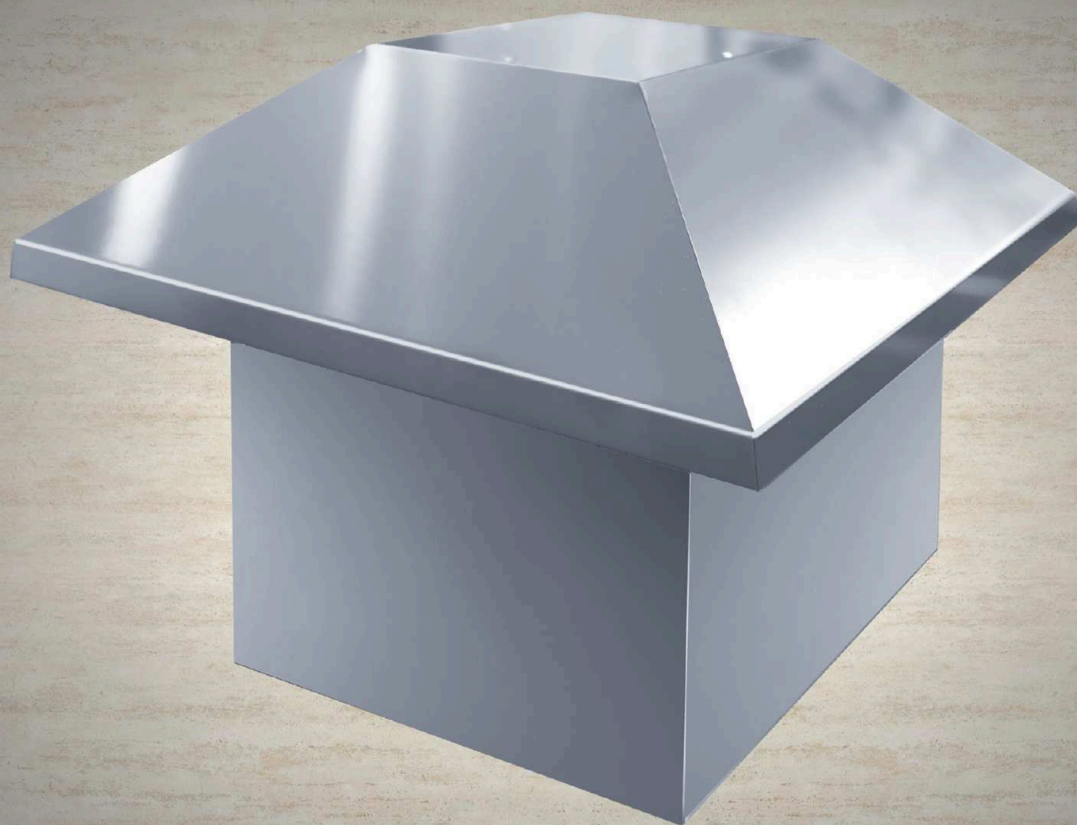


Motore  
uso esterno

Motor  
external use



Kubic

46x42  
cm



CLASS

**A**

ANNUAL ENERGY

58 kWh

FINO A - UP TO

1.000 m<sup>3</sup>/h

MAX PRESSURE

590 Pa

### CARATTERISTICHE - FEATURES

**Misura - Size** 46x42x28 cm

**Materiale - Material** Struttura e copertura in inox satinato  
body and cover in scotch brite St/steel

**Controlli - Controls** collegati a quelli della cappa  
connected to the cooker hood

**Funzioni - Functions** 4 velocità con intensiva  
4 speed with boost

**Luci  
Lights** -

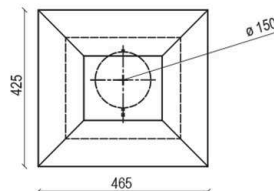
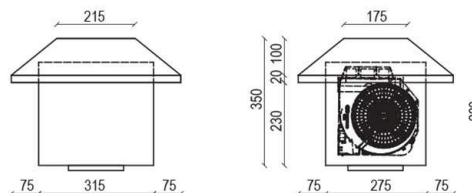
**Aspirazione  
Extraction** collegata alla struttura della cappa  
connected to the body of cooker hood

**Uscita aria - Duction** 120 - 150 mm con valvola di non ritorno  
120 - 150 mm with check valve

**Tipo d'uso - Type** aspirante  
extraction

**Filtro antigrasso  
Grease filter** -

**Max. distanza dalla cappa  
Max. Distance from hood** 600 cm



**DIMENSIONI SCATOLA - BOX SIZE** 65x36x47 cm 15 Kg

### VERSIONI - VERSION

cm. 46x42 - inox - St/Steel - 1.000m<sup>3</sup>/h  
01KUB46X42ST100